



**AICTE Sponsored Two Week Faculty Development Programme (FDP) on
Hands on Project-Based Approach for Biomedical Signal Analysis using MATLAB**
Department of Electronics and Communication Engineering
Kakatiya Institute of Technology and Science, Warangal – 506015 (TS)
(An Autonomous Institute under Kakatiya University, Warangal) (Accredited by NAAC with 'A' Grade)



Phase-I: 28 Dec, 2020 – 10 Jan, 2021

WEEK-1 Schedule

Chief Guest: Dr. V. Jagadeesh Kumar

Professor, Department of Electrical Engineering,
Head Central Electronics Centre and Dean Academic Courses,
IIT Madras

Topic: Analytical Modeling and its Application for Noninvasive
Measurements



Dr. Arnab Chanda

Assistant Professor,
Centre for biomedical Engg., IIT Delhi

Topic: Overview of Wearable Technologies: From a product
development and entrepreneurship standpoint



Dr. Sudipta Mukhopadhyay

Professor, Department of ECE,
IIT Kharagpur

Topic: Estimation of PSD



Dr. M. Jagannath

Associate Professor Senior,
School of Electronics Engineering,
VIT Chennai.

Topic: Biomedical Research - Insights from a Bird's Eye Perspective



Dr. K. Ashoka Reddy

Professor in ECE & Principal,
Kakatiya Institute of Technology & Science, Warangal

Topic: ECG signal analysis



Dr. Manish Kashap

Assistant Professor, Dept. of ECE,
NIT, Bhopal

Topic: Multi Resolution- De-nosing of Medical Images



Dr. P.A. Karthick

Assistant Professor, Dept. of Instrumentation Engg.,
NIT, Trichy

Topic: Recent Trends in Signal Processing Techniques for the Assessment of Neuromuscular and Neurological Disorders



Dr. C.B Rama Rao

Professor, Dept. of ECE,
NIT Warangal

Topic: Signal Processing Techniques for Cardiac Arrhythmia Identification and Classification(Part-1)



Dr.V.Rama

Assistant Professor, Dept. of ECE,
NIT Warangal

Topic: Signal processing techniques for Cardiac arrhythmia identification and classification(Part-2)



Dr. Bikesh Kumar Singh

Assistant professor & HoD, Biomedical Engg., NIT, Raipur

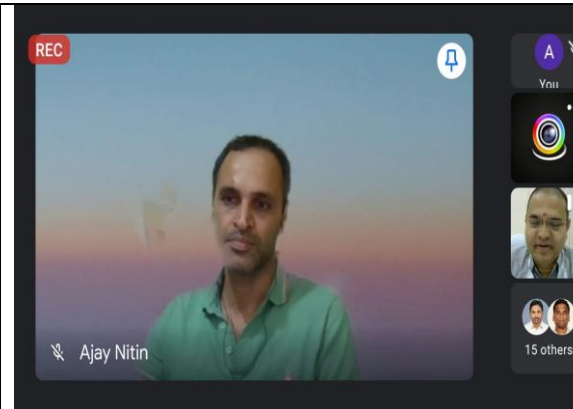
Topic: Medical image processing - Analysis of biomedical images for breast cancer



Sri. Ajay Nitin

Philips, Hyderabad(Alumni of KITSW)

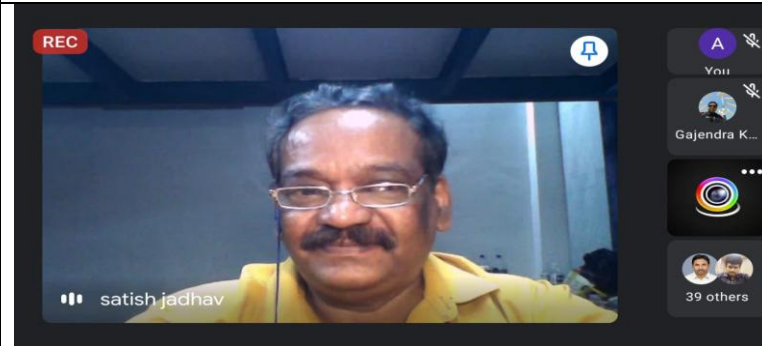
Topic: Applications of Signal and Image processing in Medical Imaging



Sri. Satish Jadav

Biokit (Industry), Mumbai

Topic: Acquisition of biosignals and processing



Sri. J.Sheshagiri babu

Assistant Professor, Dept. of ECE, KITSW

Topic: Signal processing algorithms for EEG analysis using MATLAB



Dr. G. Raghotham Reddy

Professor in ECE & Dean Student affairs, KITSW

Topic: Biomedical Image segmentation using level set methods



Dr. K. Ramudu

Assistant Professor, Dept. of ECE, KITSW

Topic: Biomedical Image Processing: A Research perspective



Dr. G. Rajendra Naik

Associate Professor, Dept. of EEE, KITSW

Topic: ECG signal Classification using Multimodal decision Learning (MDL) algorithm



Sri. P.Yugander

Assistant Professor, Dept. of ECE, KITSW

Topic: Magnetic resonance image Denoising algorithms



Sri. E.Harikrishna

Assistant Professor, Dept. of ECE,
Kakatiya University, Kothagudem, Telangana

Topic: Real Time Perspectives of Wavelet Transform in Analysis of
Biomedical Signals



Sri. B. Narasimha

Assistant Professor, Dept. of ECE,
Kakatiya Institute of Technology & Science, Warangal

Topic: Preprocessing and Spectral Analysis of Biomedical Signals in
MATLAB



Dr. M. Raghu Ram

Associate Professor, Dept. of EIE,
Kakatiya Institute of Technology & Science, Warangal

Topic: Applications of Wavelets for Reduction of Motion Artifacts
from PPG Signals



Dr. K. Raja Narendra Reddy

Professor, Department of ME,
Kakatiya Institute of Technology & Science, Warangal

Topic: PRANA MEDITATION: Integrated Approach for Wellness



Dr. M. Nalini

Associate Professor, Dept. of EIE,
SSEC

Topic: Visual Recognition using Watson Studio

